

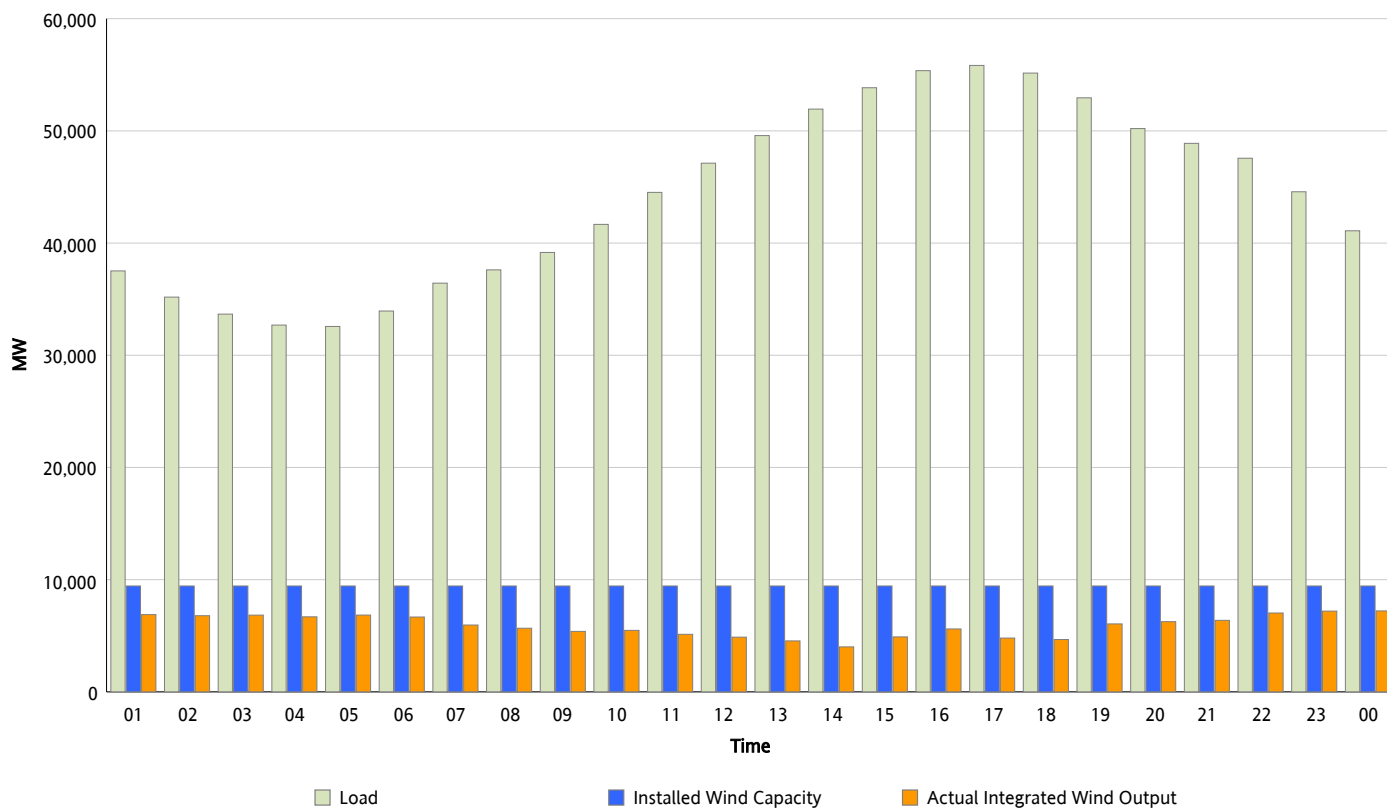


## ERCOT Grid Operations

### Wind Integration Report : 05/25/2012

Peak Load	55,834 MW
Load Peak Hour (HE)	17
Wind Over Peak	4,796 MW
Wind Record 04/13/12	7,925 MW
Max Wind Value*	7,321 MW
Wind Peak Time	22:30
Wind Integration %	16.45 %

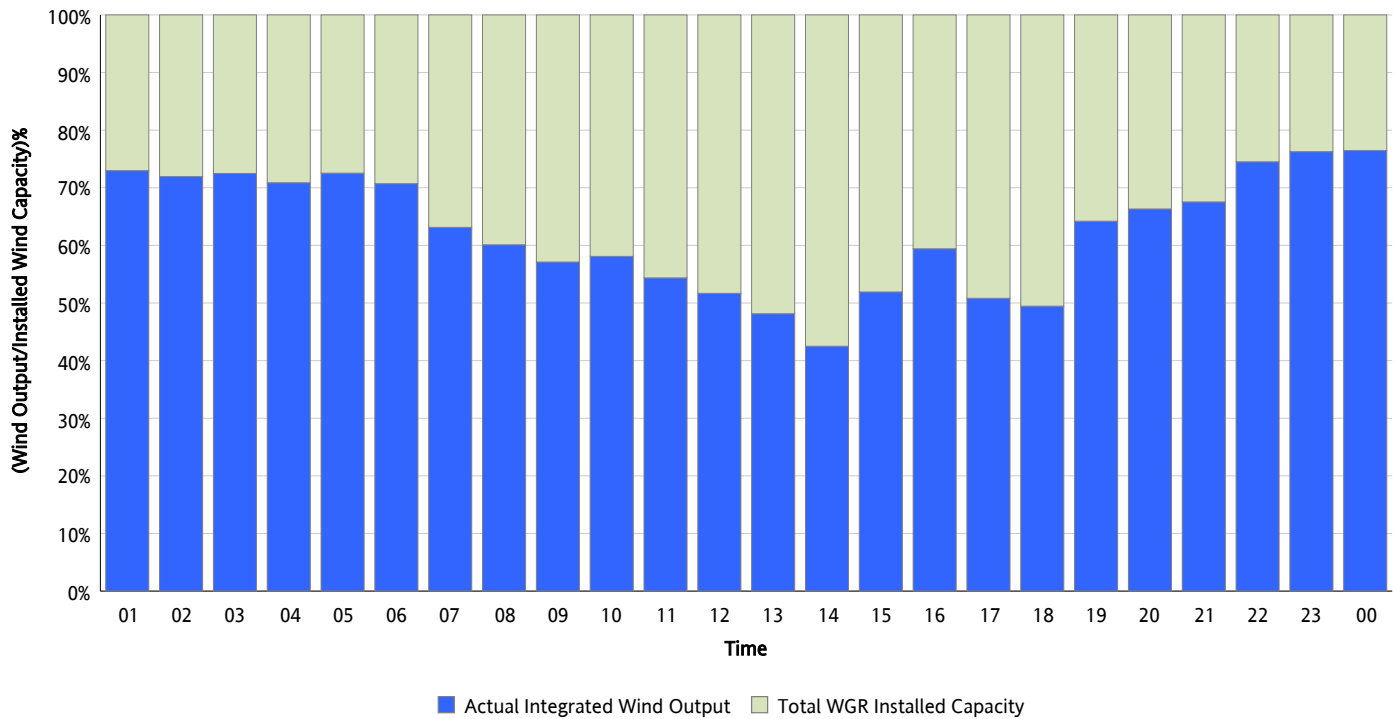
**Hourly Average Actual Load vs. Actual Wind Output**  
05/25/2012



\* Wind Record and Wind Max represent instantaneous values and the rest of the values are integrated over the hour

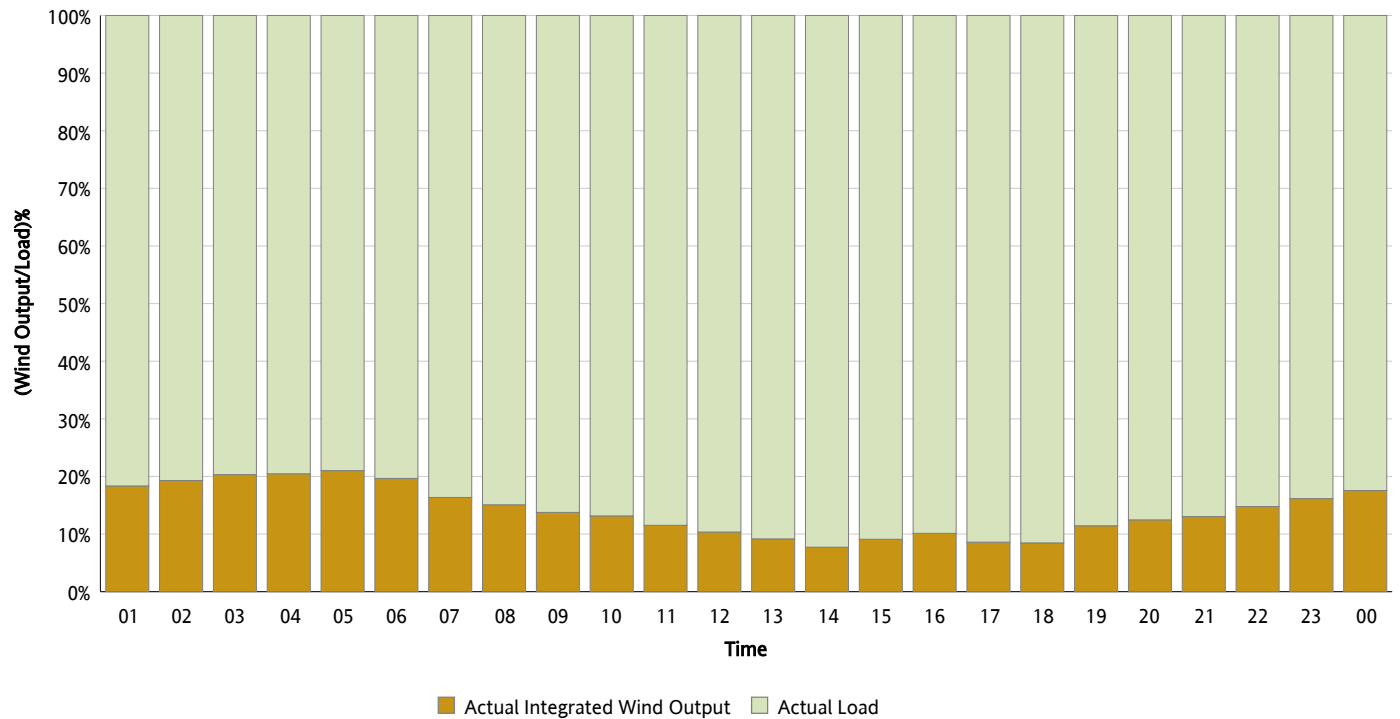
## Actual Wind Output as a Percentage of the Total Installed Wind Capacity

05/25/2012



## Actual Wind Output as a Percentage of the ERCOT Load

05/25/2012



## ERCOT Load vs. Actual Wind Output

05/18/2012 - 05/25/2012

